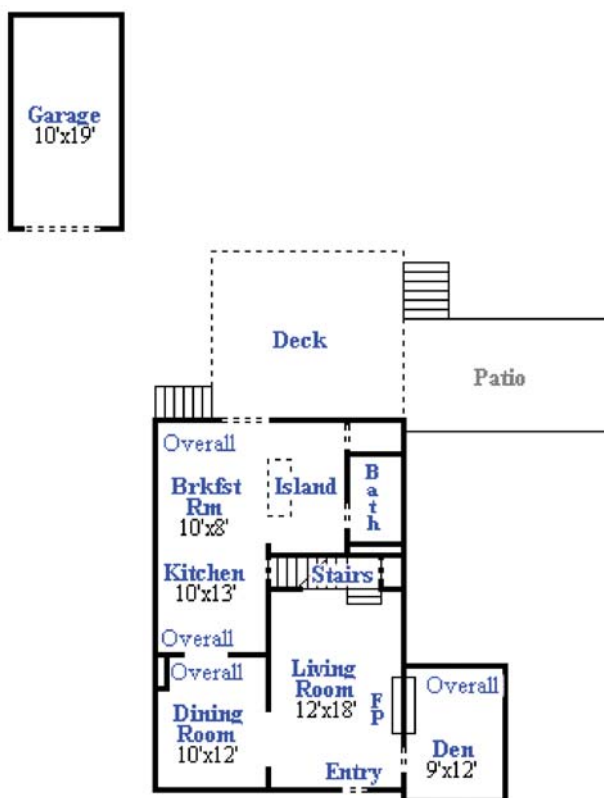


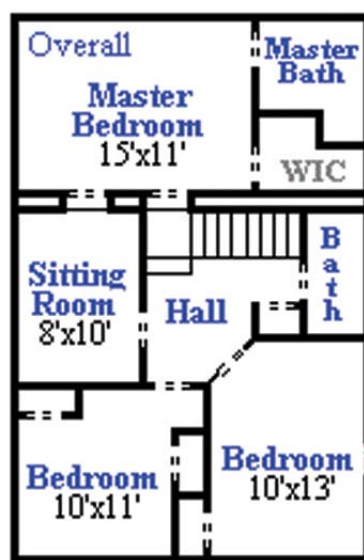
# 1712 Corwin Drive



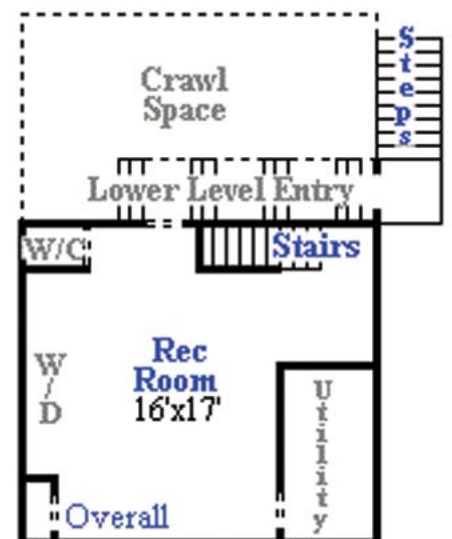
Main Level



Upper Level



Lower Level



**Carole Levin**  
 Direct: 301-681-4504  
 Office: 301-588-1000  
[www.levinallstars.com](http://www.levinallstars.com)





## Notable Features

2 Story Addition  
 Large Updated Kitchen  
 4 Bedrooms  
 3 Full Baths  
 1st Floor Office  
 Gleaming Hardwood Floors  
 Wood Burning Fireplace

Energy Efficient  
 Replacement Windows  
 Recent Central Air  
 Conditioning  
 Detached Garage + Ample  
 Parking in Driveway



## General Information

**Subdivision:** Woodside Park **Lot:** 14 **Block:** A

**Lot size:** 5,109 sq ft **Year built:** 1937

**Taxes:** Estimated property tax and non-tax charges in the first full fiscal year of ownership is \$5,909.56

**Neighborhood:** Walk to all the amenities of Downtown Silver Spring - shops, restaurants, .3 miles to I-495, 1.5 miles to Silver Spring Metro, .5 miles to Forest Glen Metro. Near Sligo Creek Park with golf course, ball fields, tennis courts and jogging paths.

